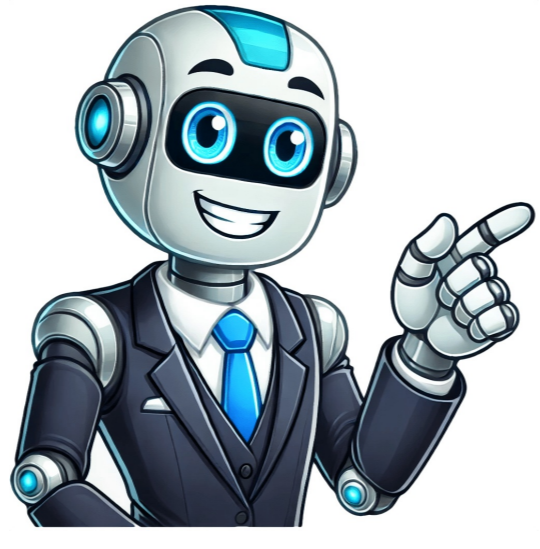


Continue



Dan and Tenebros have a set option that seems to inherit the so-called 'reverse reinforcement' effect. Of course, the effect of the set option itself is quite different from the two.[118] The existing Hongyehangma has a set option that inherits the effect of the wall.[119] It should be operated with a similar concept to the armor switching of the Tenebros armor, but compared to the polarization before, the efficiency and cost-effectiveness are relatively poor, so the preference is lower than before.[120] The story is that 0th place is 1%, 1st place is 1.5%, 2nd place is 2%, 3rd place is 2.5%, 4th place is 3%, 5th place is 3.5%, 6th place is 4%, 7th place is 5%, 8th place is 6%, 9th place is 7.5%, and 10th place is 10%.[121] Even if you only use the same option of polarization and succeed halfway, you can get 20%, which is higher than the existing Tenebros maximum of 12%. [122] Instead, unlike the dan -sin, where additional slots are held from the ninth round, additional slots are open from the beginning.[123] Based on the hero's weapon, performance equivalent to hero level 12[124] Unlike now, you could enter from level 85, and the difficulty was on the easy side with many dungeons lowered.[125] A Nasod Inspector is summoned and slams his arm down at right angles, bursting the napalm and disappearing.[126] The Ancient Bone Dragon is summoned and emits a breath in front of it before disappearing. It leaves a trail of fire where it is sown.[127] Alteracia Type-H is summoned, casts Storm Blade, and disappears.[128] A hallucinatory Joaquin is summoned, creates a huge dark cloud, then drops lightning and disappears.[129] A corrupted helper is summoned, casts iron howling (stunned enemies) and disappears.[130] The thought body of anger is summoned, claws on both sides and disappears. Because the range is very wide and multi-stage hits, it is very helpful in dungeons.[131] The shape of the mutant Magi is summoned, stamping the ground, sending out waves on both sides and disappearing.[132] With the patch dated July 9, 2021, the merit disappeared as the use of public banks for Elrianode equipment became possible.[133] Because of this option, even if 5 sets are too much for you, 2-3 sets are matched, and the remaining 2-3 are often replaced with intelligence or insight.[common] 134.1 134.2 134.3 Common to all hero equipment[137] As of the current point of time, heroic dungeon equipment appears only within grades 25-29.[138] In addition to Perkisas weapons, Eltrion weapons, secret dungeon weapons, hero dungeon weapons, and Apocalypse weapons, you can also use mana stones for space-time weapons. However, be careful as the magic stone itself is expensive and can only be obtained in the Vanimir region.[139] However, it still takes a month to make (31 refined construction crystals are needed based on the full set of the 4th dimension, but these can be obtained through quests, public banks are not available, and only 1 is given each, so it is effectively 1 month. If you only match the weapon, about 7 it takes about a day.)[140] When upgrading, the enhancement level, sockets, wedges, properties, and number of times that can be sealed remain the same as before the upgrade, and only emotions are reset.[141] However, this side is more serious if the situation is serious, but it is difficult to say that it is less.[142] Hero equipment is composed of stats that are hard to ignore, and although it is described later, 4D construction equipment can also be equipped with that option.[143] Even if there is no drop rate option at all, it drops with a fairly high probability.[144] Previously, there was only one random effect, so it was not possible to receive the reorganized item effect that can be obtained from general dungeon equipment, so the performance was delayed, so only the weapon was matched and the armor was skipped.[145] The 6 set effects of the secret dungeon equipment maximized before the reorganization were integrated into the fixed effect of the weapon.[146] However, the parts overlap a lot with other accessory sets. (Face, arms, bottom)[147] Tops: Increases polarization (enhancement value + 2)%, Bottoms: Increases party magic attack power (enhancement value + 2)%, Gloves: Increases skill damage (enhancement value) * 5%, Shoes: Increases party maximization by 10% / All parts At El Tier level 29, all change fragment options are 3% CDM.[148] Depending on the reinforcement level of the armor, 1 (up to 8), 2 (up to 9), and 3 (up to 10)[149] If you have capital, it is better to put it into Uniqlg first. In the first place, the top and gloves increase physical attack power, and the bottom and shoes increase magic attack power, but that number also affects attack power because it depends on the el tier grade and reinforcement level.[150] It's not 'critical', it's 'critical damage increase'. Let's separate and disassemble.[151] All skill damage increase options greatly increase combat power, but you can see that the attack power has actually increased a lot. If the attack power is not enough to get Apomu yet, it is a must-have option.[152] Blue Hen is the natural enemy (...) Nova and Blue Queen are also very sweet with this option.[153] Since this option carries most of the physical and magical attack power of nearby party members, carrying this option is also quite good. Helpful for party members. Reddit and its partners use cookies and similar technologies to provide you with a better experience. By accepting all cookies, you agree to our use of cookies to deliver and maintain our services and site, improve the quality of Reddit, personalize Reddit content and advertising, and measure the effectiveness of advertising. By rejecting non-essential cookies, Reddit may still use certain cookies to ensure the proper functionality of our platform. For more information, please see our Cookie Notice and our Privacy Policy.