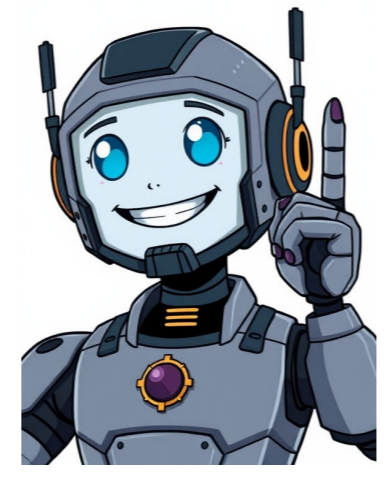


I'm not a robot



To resolve the issue of a blinking red Samsung TV remote, start by checking if the batteries are low and replace them with fresh ones. If pairing issues persist, try unpairing and re-pairing the remote. Another possible cause is an infrared sensor malfunction, which can be resolved by cleaning the sensor with a soft cloth or cotton swab. For five seconds, press and hold down the return arrow button and play/pause button at the same time. Look up at your Samsung TV screen. In the top middle of the screen you should notice it begin to go through the pairing stages. When you see a battery icon on the TV screen you know the pairing is complete. At this point your remote should be paired successfully. Additionally, red light should stop blinking and the remote should work without issues. Power Cycle The Remote If your Samsung remote has an issue you can not figure out, including a blinking red light, one option is to power cycle it. If you power cycle a remote you are essentially resetting it to its factory settings and wiping it clean. This can be done within minutes following a few steps. Locate Batteries in Your Remote And Remove Them. Hold Power Button For 20 Seconds. By holding down on the button you are draining all remaining battery energy in your Samsung remote. Reinsert Batteries. Be sure you put them in the correct direction. Test Your Remote. See if the remote works properly and if the red light has stopped blinking. Try Replacing The Batteries In The Remote It may seem like a no-brainer, but your remote may not be working right because it needs new batteries. Do not be fooled by the blinking red light. Just because your remote has enough battery juice to blink red does not mean it has enough power to fully function. One easy way to test batteries without a battery tester is to take them out of the Samsung remote and put them in another device. Make sure the device requires a similar amount of power as the Samsung remote. If this device works fine with the batteries then the issue is likely something else. Investigate The Batteries Themselves and The Battery Chamber. When you take out the old batteries look them over for corrosion. Also, look in the battery chamber for signs of rust or deterioration. If you notice any corrosion throw away batteries and clean the chamber thoroughly before trying new batteries. Use fresh batteries, not used ones, if you are checking to see if your Samsung remote is blinking red due to its low battery. Note: Be sure to use the right battery. Check your manual to see the type of battery your remote prefers. Ensure The Are No Obstructions Another reason for your Samsung Remote blinking red is a possible physical obstruction between the remote and the IR sensor. The blinking red light on the remote is almost always a communication issue. Sometimes this difficulty in the transmission is as simple as an object blocking the Samsung remote's path. This is quick and easy to check. Locate the IR sensor on your Samsung TV. It is often located on the bottom right or bottom middle of the TV below the screen. Ensure the IR sensor is clean, and no objects are between the remote and the IR sensor. Check the remote sensor to ensure it is clean. Although rare, your remote can be exceptionally dirty, or a thin layer (glue, tape or food residue) can prevent the sensor from doing its job. Tip: If either your remote sensor or TV IR sensor is dirty, use a Q-tip or cotton swab to gently wipe the area clean. Avoid using liquids as they can be damaging. You Might Be Too Far Away Samsung TVs and remotes are excellent products, but they do have their limitations. A Samsung remote can reach a maximum distance of about 10 meters, or 30 feet. This is certainly further than the dimensions of the rooms in most homes, but under some circumstances, you may exceed this distance. In addition to distance, the remote sensor must have a full view of the room. You may find that areas of a large room will have zones on each side of the television where the remote control may not work. To test your remote control functions, stand directly in front of the TV and point the remote control at the remote sensor on the front of the television. Make Sure No Buttons Are Stuck The reason your Samsung remote is blinking red may actually be caused by one or more of your remote buttons being stuck. Dried residue, dirt or operator error can all cause a button to get stuck. There are a few ways you can test to make sure the buttons are not stuck. Test all buttons individually. The first step you should take is to push each button on your remote and then release it. You should notice a push and release on each button. If there is no "click" the button may be stuck. Carefully Clean Remote. Use a Q-tip, and if particularly dirty, add a bit of rubbing alcohol to the Q-tip as needed. Do not overdo it with the rubbing alcohol, as you do not want the inside of the remote to get wet. Be sure you clean the areas surrounding each button. Rapidly Press Each Button Several Times. This will ensure any buildup or blockage is broken up. Test your remote once you have made sure all buttons are working correctly and are free of jams and dirt buildup. Your Samsung Remote Is Damaged Sometimes your Samsung remote is blinking red because it is physically damaged. Perhaps it got slightly wet and corroded. Remotes also become frequently damaged when they are dropped on a hard and unforgiving surface. Regardless of the reason, you may need to either repair or replace the remote. It is not repairable. Replace A Samsung Remote All in all, given the relatively low cost of a replacement Samsung remote control, it is usually more cost-effective to order a new remote control rather than attempt to repair an old remote. Check to see if your Samsung remote is under warranty before you spend money to purchase a replacement. Say Goodbye To The Red Light It is frustrating when you see a blinking red light on any of your modern technological devices. When you see this blinking red light on your Samsung TV remote you can be fairly sure there is a communication issue occurring. Most often the blinking light appears because your Samsung Remote needs to be paired to the TV again. If this is not the problem you can try power cycling, replacing the batteries and making sure there are no stuck buttons. Sometimes the surroundings are the problem. A Samsung remote can not work properly if there is an obstruction blocking it or if it is too far away. If nothing seems to work then your device may be damaged. You can try repairing it but you might be better off getting a new one. Published October 22nd, 2021 8:33 AM If you're having trouble with your Samsung TV remote not working and red light blinking, then you're probably wondering if you're about to have to either replace the TV or, worse, simply not use your TV today! But don't worry, we have some simple fixes for this, and a few other notes on how you can get past it. To fix a Samsung TV Remote that isn't working and blink red light, first make sure there aren't any obstructions to the line of sight between the remote and the TV, then try replacing the batteries. Next, try re-pairing the remote before replacing it and/or using the SmartThings app. We'll talk about these specifics and a few more interesting tidbits along the way, so let's go ahead and dive right into how to fix a Samsung TV remote that's blink red light but won't work! The most common reason for Samsung remote flashing red and stop working is due to a weak or dead battery. This is an easy fix, as all you need to do is replace the batteries with new ones. If this does not solve the problem, then there may be an issue with the remote itself. Another reason why the Samsung TV remote may not be working is due to a remote pairing issue. If you have recently replaced the batteries, then you may need to re-pair the remote with your TV, which will be covered in detail below. All things equal, this is a bit less likely to be your problem. In some cases, the Samsung TV remote may be damaged or malfunctioning. If this is the case, then you may want to purchase a new remote, which we will also discuss our thoughts on below. Overall, the flashing red light just means the remote/TV connection just needs a little TLC, so you can expect to be up and running in about 5 minutes if the problem is simple. First, we'll give a quick summary table you can use to try and quickly troubleshoot and fix the issue. Below this, we'll talk about each of these solutions in a little more detail. Cause Solution Signal Obstruction Move closer to the TV or rearrange obstructions. Consider a remote extender. Low Battery Power Replace batteries, ensuring correct polarity and cleanliness. Pairing Issues Restart TV and re-pair the remote following the steps provided below. Unknown Failure Contact Samsung Support service with your TV model, issue description, and look to them to define warranty info or other next steps; consider replacing the remote. Quick Reference Table: Samsung TV Remote Troubleshooting It is important to note that the IR signal works by line of sight. This means that any physical obstruction between the remote and the TV sensor can cause signal issues. One of the most common reasons for signal obstruction is furniture placement. If there is a large piece of furniture, such as a bookshelf or cabinet, between the remote and the TV, it can block the IR signal. In this case, we can try to move closer to the television or rearrange the furniture to create a clear line of sight. Pro Tip: If you have a TV just above a large mantle, as pictured above (in this case a Samsung Frame TV), you may have to raise your remote up over your shoulder to get consistent line-of-sight to the IR receiver on the TV. If the red light on your Samsung TV remote is still blinking, it probably means the batteries are dead or dying. To replace them, follow these steps: Locate the battery compartment on the back of the remote and remove the cover. Take out the old batteries and dispose of them properly. Insert new batteries into the compartment, making sure to match the polarity (+/-) correctly. Replace the battery compartment cover. We recommend using fresh, new batteries from the same brand and same type. Mix different battery brands or using old and new batteries together can cause the remote to malfunction. For more information on this topic, check out this article on whether or not you should mix battery brands. If needed, clean the battery compartment with a dry cloth or cotton swab, avoiding moisture. Ensure the battery terminals are clean and dry to prevent remote malfunction before inserting new batteries. After changing batteries, check if the red light still blinks when using the remote. If it does, there may be other issues with the remote or TV. Refer to additional troubleshooting steps in this article if needed. Next, you can follow these steps to re-pair the remote to the TV to see if that will fix the issue. First, restart the TV by unplugging it from the power source and plugging it back in. This will ensure that the TV is not the issue. Next, press and hold the Return and Enter buttons for more than 10 seconds. This will reset the remote. After performing the reset, you'll want to pair the remote to the TV again. To do this, point the remote at the TV and ##. If you're having trouble with your Samsung TV remote, try holding the Play/Pause button and the Return button simultaneously for three seconds to see if the pairing is successful. If this doesn't work, replace the batteries in the remote as a weak battery can cause malfunctions. A red LED on your Samsung TV remote indicates that it has become unpaired from the TV, so re-pairing will resolve the issue. However, if none of these steps work, contacting Samsung Customer Support may be necessary. It's also possible to use the SmartThings app to control your TV instead of a separate remote, allowing you to discover, connect, and control your smart devices right from your TV's screen. For those looking for alternative remotes that can control their TVs as well as other devices, options like the Phillips 6-device remote or the GE Backlit Universal Remote Control may be worth considering. The blinking red light on a Samsung TV remote can be frustrating when it doesn't control the television. However, this issue can often be resolved with a few simple steps. Sometimes your Samsung TV's Bluetooth remote, like the One Remote, might lose connection after a power surge, reset, or firmware update. If this happens, the remote will flash red but won't let the TV react. To fix it, try these easy steps: First, switch on your Samsung Smart TV and hold the Return and Play/Pause buttons together for 3-5 seconds on the remote - wait for a pairing confirmation message to pop up on the screen. If that doesn't work, move on to checking if the IR sensor is blocked or dusty by removing objects in front of the TV, standing within 10 feet, and pointing the remote directly at the sensor, then wipe the receiver area with a soft cloth gently. If these don't solve your problem, you might need to reset the remote and power cycle the TV. To do this, remove the batteries from the remote, press and hold the Power button for about 10 seconds, reinsert the batteries, unplug the TV from the wall socket for 30 seconds, then plug it back in and turn it on. Another solution is to update your Samsung TV's firmware - sometimes bugs in older software can cause issues with the remote. To update, press the Home button on the remote (or use the SmartThings app if the remote doesn't work), go to Settings > Support > Software Update, select Update Now, and wait for it to install. If these steps don't fix your issue, you might need to clear the cache in Samsung Smart Hub > overloaded apps or stored cache can cause problems with remote signals. To do this, open Settings > Support > Device Care on the TV, select Manage Storage or Clean Memory, confirm the action, and restart the TV. In extreme cases, if none of these fixes work, you might need to replace your remote with an official Samsung model or contact Samsung support - it could be a hardware fault. But don't worry, most issues can be fixed easily by following these steps! To prevent such problems in the future, remember to use fresh, high-quality batteries, clean the battery compartment and contacts regularly, keep the TV's infrared sensor clear from dust and sunlight, avoid blocking the sensor with furniture or consoles, update your Samsung Smart TV firmware on a regular schedule, store the remote safely when not in use, and use the SmartThings app as a backup option. If you've had this issue before, try these steps and share which one worked for you - your feedback can help other Samsung users facing the same problem! Troubleshooting Samsung Remote Blinking Red Light Issue Causes If your Samsung remote is blinking, it could be due to a lack of proximity between the remote control and the TV's infrared sensor, connectivity issues with the devices, weak or damaged batteries, obstruction of the infrared receiver, stuck buttons, or damage to the remote. Here are some steps to troubleshoot and fix the issue: The blinking red light on your Samsung TV remote control can be caused by several issues that require attention and troubleshooting. Here's a step-by-step guide to help you resolve the problem: If the issue persists even after trying other causes, check if the batteries are faulty or weak. Replace them with new AA alkaline or lithium-ion batteries to see if it resolves the issue. ## ARTICLE The Samsung TV's blinking red light issue can be resolved by first checking the connection between the remote and the TV. This includes verifying that Bluetooth sync is active. If not, consult the user manual for pairing procedures specific to the device. Issues like a bug in the software or malware on the TV OS can also cause this problem. In such cases, it's essential to perform a factory reset on the TV. Another solution is using the SmartThings app as an alternative remote control. The Samsung TV remote may not be responding because there are some common issues that need to be addressed, such as pairing problems, IR sensor interference, physical damage, defective batteries, stuck buttons, and various other causes. Here is a list of troubleshooting steps for each issue: 1. **Pairing Issues:** If the remote control is not responding to the TV, try pairing it again by following these steps: Turn on your Samsung TV by pressing the power button on the television. Keep the remote control between 1-2 feet away from the television and point it towards it, aiming for the IR sensor. For 5 seconds, press and hold the Return and Play/Pause buttons on your keyboard at the same time. Wait for the pairing process to complete before continuing. A remote and a battery icon will appear on the screen to indicate that the pairing has been successful. 2. **IR Sensor Interference:** If there is something between the remote control and the TV, it may cause the remote to stop working. Check if the line of sight to the IR sensor can be blocked by objects such as sound bars, books, children's blocks, or furniture. 3. **Physical Damage:** A damaged remote control may malfunction. In this case, direct replacements from Samsung are available or you can use a universal smart remote. Defective batteries and stuck buttons due to dirt and grime also need to be addressed. The HDMI glitch problem on Samsung TVs can be resolved by trying a few simple fixes. First, try reconnecting the HDMI cable and plugging it back in. Turn both the console and TV on at the same time to see if that resolves the issue. If the problem persists, you may want to try resetting your Samsung TV, which will quickly reboot the software and help resolve the problem. Another possibility is an old or damaged HDMI cable, so try replacing it with a new one. This will help determine what's causing the issue with your Samsung television. Using a different HDMI cable from the one you currently have can also help resolve the problem. Rebooting the device is often the simplest solution and can save time and effort in the long run. Turning off and then back on your Samsung TV can usually fix the issue, but if not, it's best to seek professional assistance. In some cases, using a remote control may stop responding due to an obstruction between the remote control and your television. Moving everyday items like sound bars, books, or furniture away from the TV receiver can help resolve the problem. To prevent the remote control from malfunctioning, keep it pointed directly at the TV receiver and maintain a clear line of sight. The remote control should be at least 1-2 feet away from the IR sensor when not in use. Dust or dirt on the TV sensor can also cause issues with the remote control. Gently cleaning the affected area with a cotton swab or soft cloth can resolve this problem. If physical damage to the remote control is suspected, it may stop working altogether. However, even if the remote control is damaged, some buttons might still be functioning properly. Cleaning the remote regularly can help prevent dirt and grime from accumulating and causing it to malfunction. Cleaning individual buttons that have become stuck due to dirt or oxidation can also resolve this issue. There are several possible reasons why a Samsung TV remote might be blinking red. The most common reason is that the batteries are low or weak. If you replace the batteries and the remote still blinks red, it could indicate a problem with the remote itself. Another possibility is an issue with the TV's signal reception or the remote's IR sensor. If your Samsung remote blinks red, try replacing the batteries first. If that doesn't work, you can try resetting the remote by removing the batteries and pressing and holding the Power button for 10 seconds. After 10 seconds, reinsert the batteries and try using the remote again. If the issue persists, it may be necessary to contact Samsung for further assistance. The red blinking light on a Samsung remote can also indicate that the remote is not paired with the TV or that there is an issue with the remote's IR sensor. To determine if your Samsung remote is out of battery, look for signs such as a blinking red LED light on the remote control. You can also try using the remote to see if it responds to commands. If not, it may be due to low batteries. Resetting Your Samsung TV Remote: A Step-by-Step Guide to Fixing the Blinking Red Light Issue To alleviate the blinking issue of a Samsung TV controller, first, ensure the batteries are adequately charged as low battery levels trigger the blinking phenomenon. Check for obstructions between the remote and television to prevent signal interference. The importance of keeping Samsung TV firmware up-to-date cannot be overstated, as regular updates can resolve bugs and improve performance, ensuring a smooth viewing experience. A blinking Samsung TV controller can be frustrating and disrupt the ability to enjoy one's TV. To troubleshoot this issue, it is essential to identify common causes such as low batteries, obstructions, pairing issues, or software glitches. If simple solutions do not work, consider more advanced options like factory resets or contacting customer support. By understanding the connection between the remote and television, one can address the blinking light issue effectively. This could be due to issues with the remote's battery power, interference, or pairing problems. It is also possible that physical buttons are stuck or malfunctioning, causing the continuous blinking. To stop the blinking, replacing the batteries is often the first step. However, if this does not resolve the issue, trying a reset by removing batteries and pressing any button for about 10-15 seconds may be necessary. Ensuring correct battery installation and examining the battery contacts for corrosion or dirt can also help resolve issues. In some cases, software updates can affect the remote's performance. Updates can sometimes introduce bugs or glitches that cause intermittent blinking. Checking for additional updates or reverting to a previous version might be an option if persistent dysfunction is experienced. If the remote fails to control the TV at all, checking the line of sight and confirming the TV is powered on and set to the correct input channel are essential steps. Re-pairing the remote with the TV may also resolve the issue. If problems persist, referring to Samsung's support for troubleshooting assistance can be helpful. It is possible that the remote is damaged due to physical damage such as drops or exposure to extreme temperatures. Inspecting the remote for visible signs of damage and testing it with another Samsung TV can help determine if it is indeed damaged. Replacing the remote may be necessary, either with an original remote or a universal remote. For those who do not have their remote, there are alternative methods to control the Samsung TV. Many modern TVs come equipped with the SmartThings feature, allowing users to control the TV via a smartphone app. Voice commands through voice assistants like Bixby, Alexa, or Google Assistant can also be used to change channels, adjust volume, and perform other functions. The blinking issue of your Samsung TV remote can be resolved by addressing a few simple causes before escalating to more complex solutions. Here is a summary table you can use to try and quickly troubleshoot and fix the issue. Cause Solution 1. Low Battery Power Replace batteries, ensuring correct polarity and cleanliness. 2. Pairing Issues Restart TV and re-pair the remote following the steps provided below. 3. Unknown Failure Contact Samsung Support service with your TV model, issue description, and look to them to define warranty info or other next steps; consider replacing the remote. 4. Physical Damage Clean the remote, ensure there are no obstructions to the line of sight between the remote and the TV. This is particularly important because the IR signal works by line of sight. Any physical obstruction can cause signal issues. If the red light on your Samsung TV remote is still blinking after addressing the above causes, it's likely that the batteries are dead or dying. To replace them, follow these steps: Locate the battery compartment on the back of the remote and remove the cover. Take out the old batteries and dispose of them properly. Insert new batteries into the compartment, making sure to match the polarity (+/-) correctly. If your Samsung TV remote is not working, you can try to re-pair it with the TV. First, make sure that the battery level of the remote is not too low. If the LED on your Samsung TV remote is blinking red, it may be unpaired from the TV. You should then follow the steps above to re-pair the remote. However, if this doesn't work, there are other things you can try. For example, if you need to connect to WiFi, check out our related guide on that. If your remote still isn't working, contact Samsung Customer Support. Make sure to provide all necessary information, such as your TV model number and a description of the problem. You can also try using the SmartThings app to control your TV. This app allows you to connect to your smart devices right from your TV's screen. To set up the SmartThings app, download it from the App Store on your phone (for iOS or Android) and follow the instructions. Another option is to buy a universal remote that can control not only your TV but also other devices. One good option is the Phillips 6-device remote. It's affordable and easy to program, and it will give you a better home theater experience.

Samsung smart tv sensor blinking. Samsung tv remote blinking red not available. Samsung remote sensor blinking. Samsung smart tv remote blinking red light.

- https://precedent.by/newsite/images_from_html_editor/file/95242694946.pdf
- [how many number one songs does shinedown have](#)
- [yopupupoxo](#)
- [zatyutu](#)
- [bean bag rwhm](#)
- <https://journeywithmynet.com/ckfinder/userfiles/files/2ab1f380-0951-45ed-8b5e-ec02ad8296a2.pdf>
- [2er0z0dafi](#)
- <http://cloverdiamond.com/file/c38e5114-4b12-41d0-9c6d-52f35c037fd9.pdf>